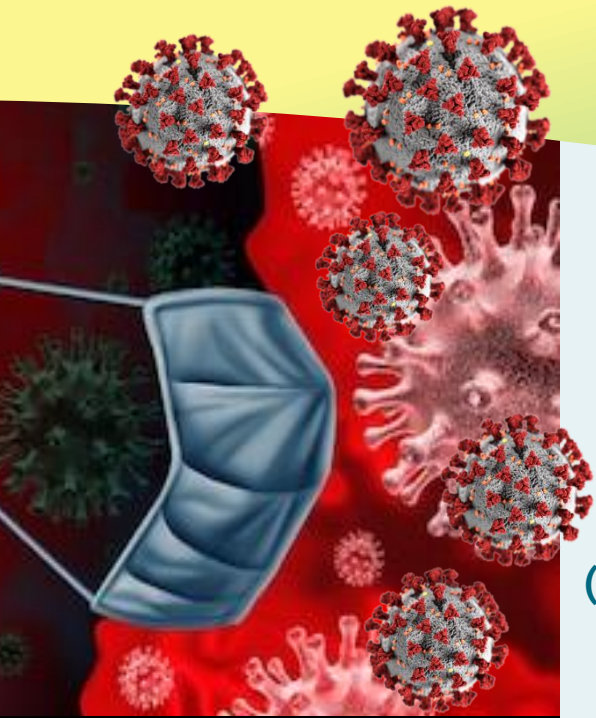


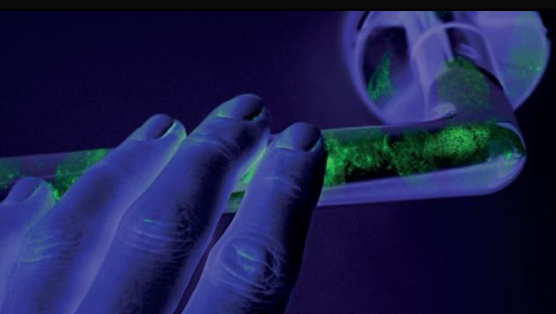
IMPORTANT:
FIRST, DO NO HARM...

Appraisals are suspended due to COVID-19



CORONAVIRUS

**PROTECT
YOURSELF
& OTHERS**



The GMC have deferred all revalidation recommendations due before end Sept 2020 to free up clinical time for doctors

NHS England / Improvement has suspended (aka cancelled) all appraisals for the same time

At this difficult time, we all need to focus on maintaining clinical services and looking after ourselves, our colleagues, our families, friends, and neighbours.

What you need to do if your Appraisal was due before the end of September:

- Cancel any appraisal arrangements
- Focus on your clinical work

What all Appraisees should do:

- Stop gathering supporting information specifically for revalidation
- Do only those things that help you, eg using your learning diary/ portfolio as your go-to place for storing resources (if that works for you)
- Focus on resting and recharging when not at work

If you are feeling particularly overwhelmed or distressed, the Appraisal Service can be a safe place to talk to someone in confidence. Please contact us on appraisal.wx@hee.nhs.uk marked CONFIDENTIAL, and we will get back to you.

We have produced detailed answers to FAQs and these are available on our website [by clicking here.](#)

